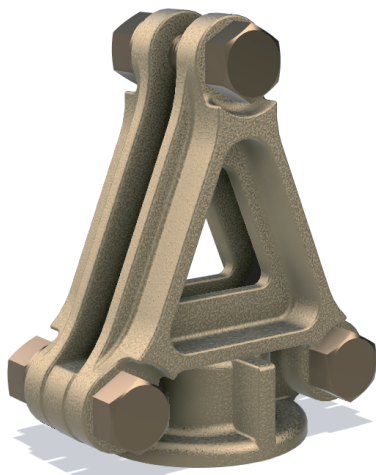
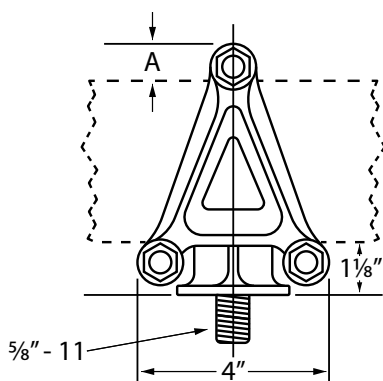


# Bus Support Fittings + Hardware

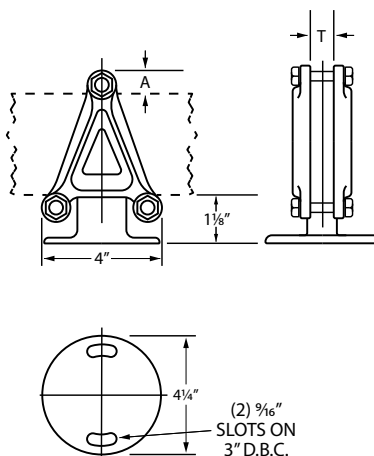
## Type V 3 Bolt Style - Vertical Bar



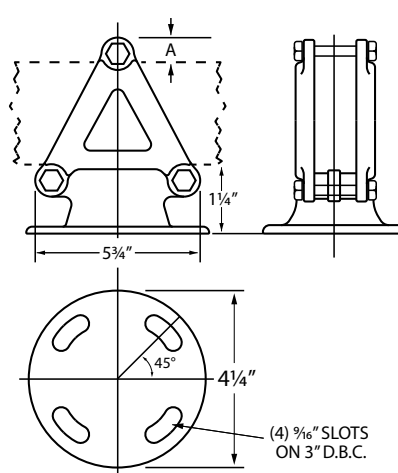
The type "V" conductor support is designed for vertical bus bar systems in applications which require no tap off from the main bus run. Units have three clamping bolts, nuts and lockwashers. Standard clamp for tight fit of bars and spacers. If slip fit desired note at time of order.



**Type VH**



**Type VHO**



**Type VE3**

"VH" For Use With Class A-20 Insulator Center Bolt Mounting			"VHO" For Use With Outdoor Type Insulator 3" Bolt Circle Mounting		"VE3" For Use With Class A-30/B-30 Insulator 3" Bolt Circle Mounting
Bus Width (In.)	Catalog Number	Dimension in Inches	Catalog Number	Dimension in Inches	Catalog Number
2	212121	3/4	632123	3/4	321952
3	212123	3/4	632143	3/4	321954
4	212125	13/16	632163	13/16	321956
5	212126	13/16	632173	13/16	321957
6	212127	13/16	632183	13/16	321958

For cross reference or other information, please contact us.  
[deltastarcc.com](http://deltastarcc.com)



**DELTA STAR  
CONNECTOR COMPANY**

